

**Unit A**

**Nurse Aide Workplace Fundamentals**

**Essential Standard 1.00**

Understand the range of function, legal and ethical responsibilities of the nurse aide within the healthcare system.

**Indicator 1.02**

Understand nurse aide's range of function as a member of the healthcare team.

# Understand **nurse aide's** **range of function** as a member of the healthcare team.



**As a member of the Nursing Department, the nurse aide plays an important role in resident care.**

**The nurse aide spends more time in direct contact with the resident than any other member of the healthcare team.**

- **Assist the licensed nurse by performing delegated tasks directly to residents who are ill and unable to care for themselves.**

- Nurse aide tasks are **supervised** by the **licensed nurse**.



- Serve as the **eyes** and **ears** for the healthcare team



**Make and report/record observations accurately regarding**

**1. Resident condition, care, and resident's response to care**

**2. Resident's environment**



**Report / Record**



## Measure and report/record:

1. Vital signs
2. Height and weight
3. Intake and output



**Report / Record**



## Help residents with personal needs:

- **Hygiene**
- **Safety**
- **Nutrition**
- **Exercise**
- **Elimination**
- **Mobility**





# Help residents with personal needs: *(continued)*

- Communication
- Socialization activities
- Comfort measures
- Restorative procedures

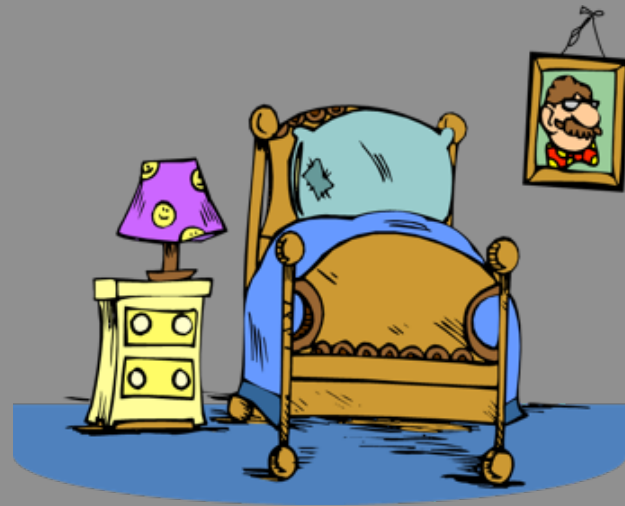


- Assist in resident admission and discharge to the facility



**Admitting**

Maintains a  
clean and  
safe resident  
environment



# Assist in the collection of various specimens



# Answer call signals



Call signals/lights  
should **NOT** be  
perceived as **noise and**  
**interruption**



# **Answering call lights in a timely manner:**

**1.helps prevent falls.**

**2.improves rapport between resident/family and staff.**

**3.increases resident/family confidence in the staff' s ability to care for the needs of the resident.**

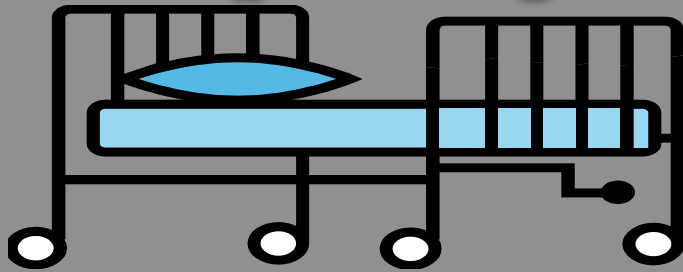
# Assist in the transportation of residents within a facility

[Transporter Describes His Job](#)





# Cleaning and care of equipment

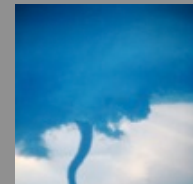


Comply with infection control and safety practices, policies, and procedures...

**Standard Precautions**

**Fire Drills/Preparedness**

**Disaster Drills/Preparedness**



## Resident Care Plan and Resident Care Conferences:

- **May attend Resident Care Conferences**
- **Assist to develop/revise care plans**
- **Share care suggestions**
- **Report observations**

