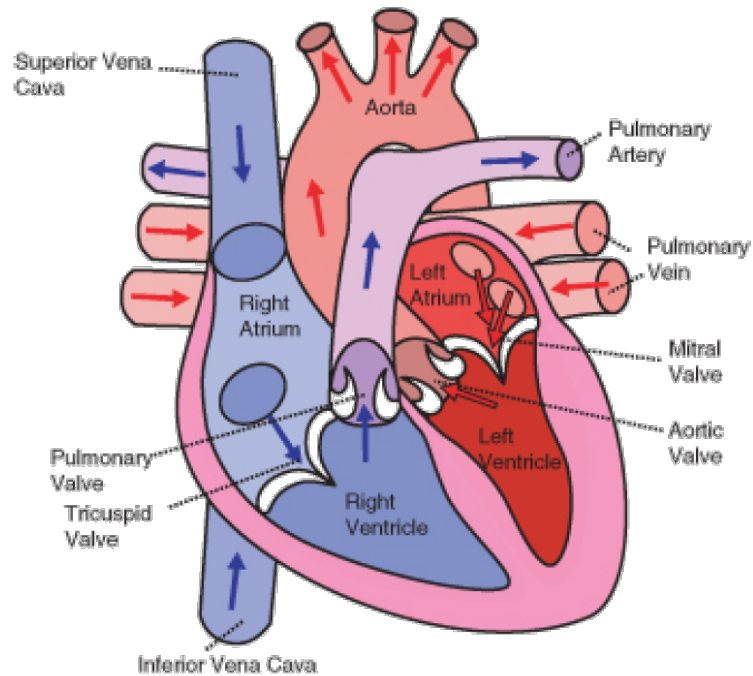


---

Trace the Flow of Blood Through the Heart

---



Deoxygenated blood from body tissue

↓  
Superior vena cava

↓  
Inferior vena cava

↓  
Right atrium

↓  
Tricuspid valve

↓  
Right ventricle

↓  
Pulmonary valve

↓  
Pulmonary artery

↓  
Both lungs

↓  
CO<sub>2</sub> and O<sub>2</sub> exchange in the alveoli via Pulmonary veins

↓  
Left atrium

↓  
Mitral valve

↓  
Aortic valve

↓  
Aorta

↓  
Transporting oxygenated blood to body cells